

RAYMOND YEKEYE

OPERATIONS DIRECTOR

NAC ZIMBABWE

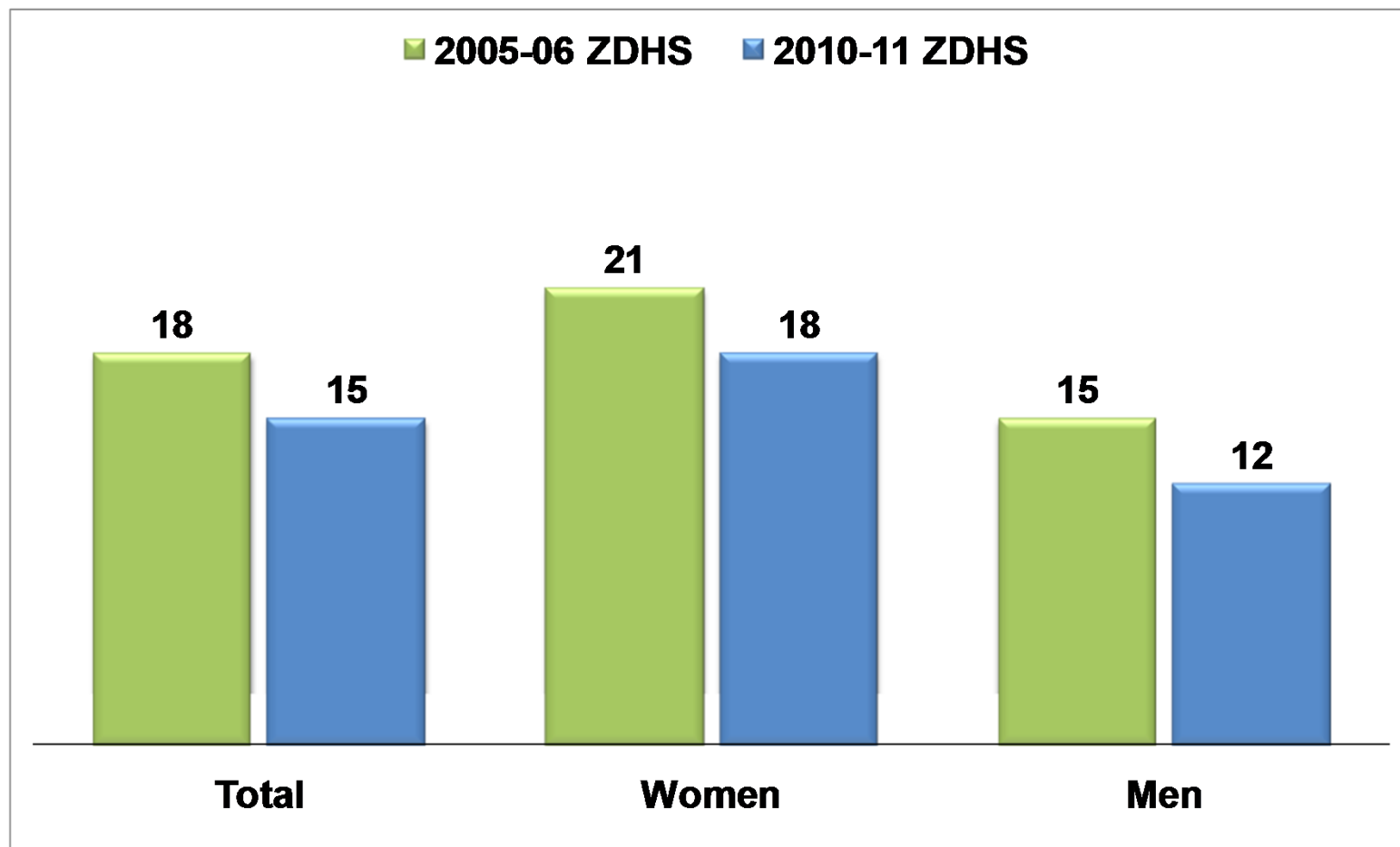
Know Your Epidemic

- **15%** of adults are HIV-positive ZDHS 2010/11 compared to **18%** in 2005-06
 - Currently, **18%** of **women** and **12%** of **men** are infected
- Prevalence is highest among the **widowed** and the **divorced/separated**
- Prevalence increases with **number of lifetime partners**
- **12%** of couples are discordant
- **6%** of young people age 15-24 are HIV-positive

Source ZDHS 2010-2011

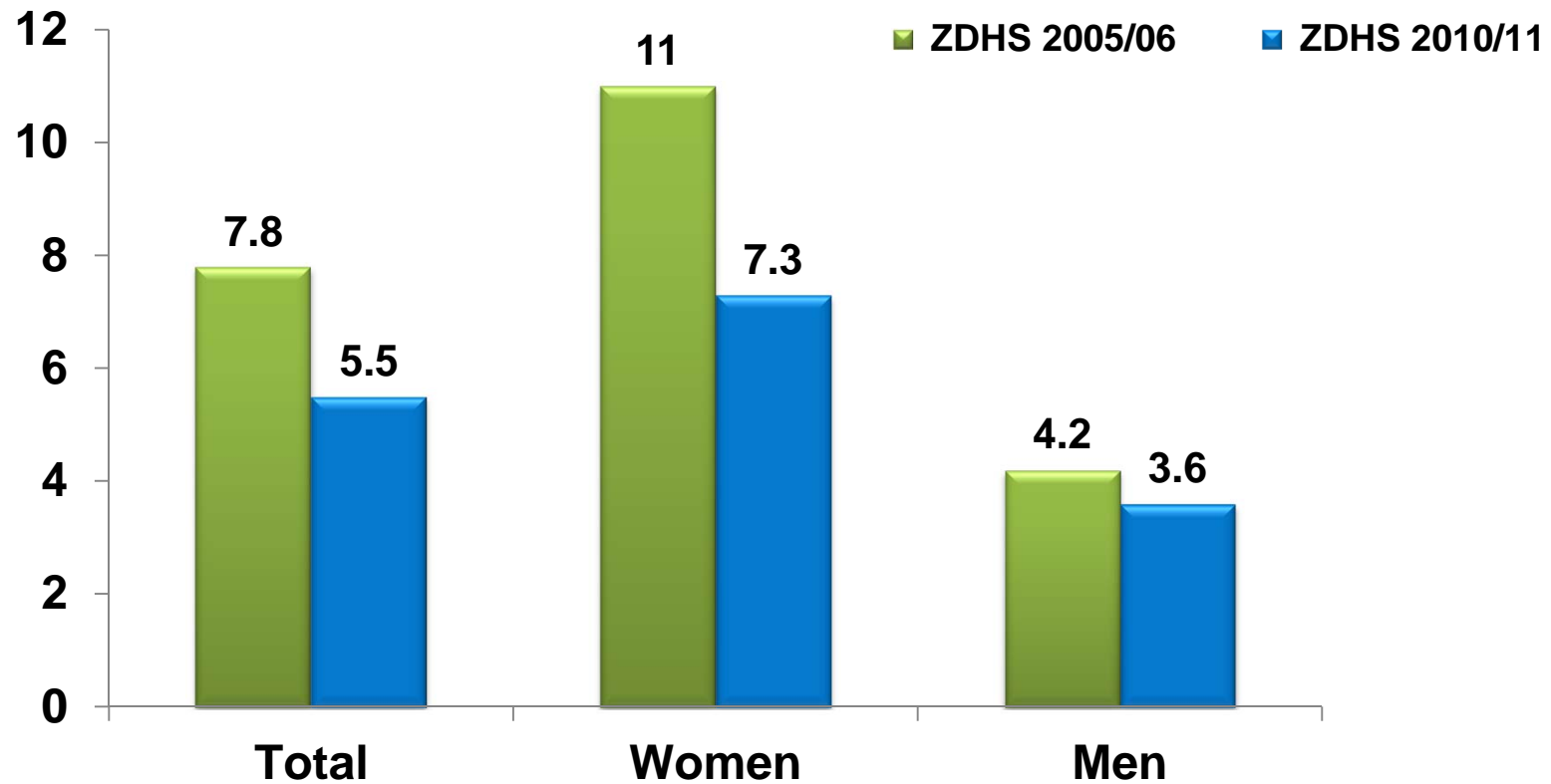
Trends in HIV Prevalence Age 15-49 years

Percent HIV positive, women and men age 15-49 years



Trends in HIV prevalence 15-24 years

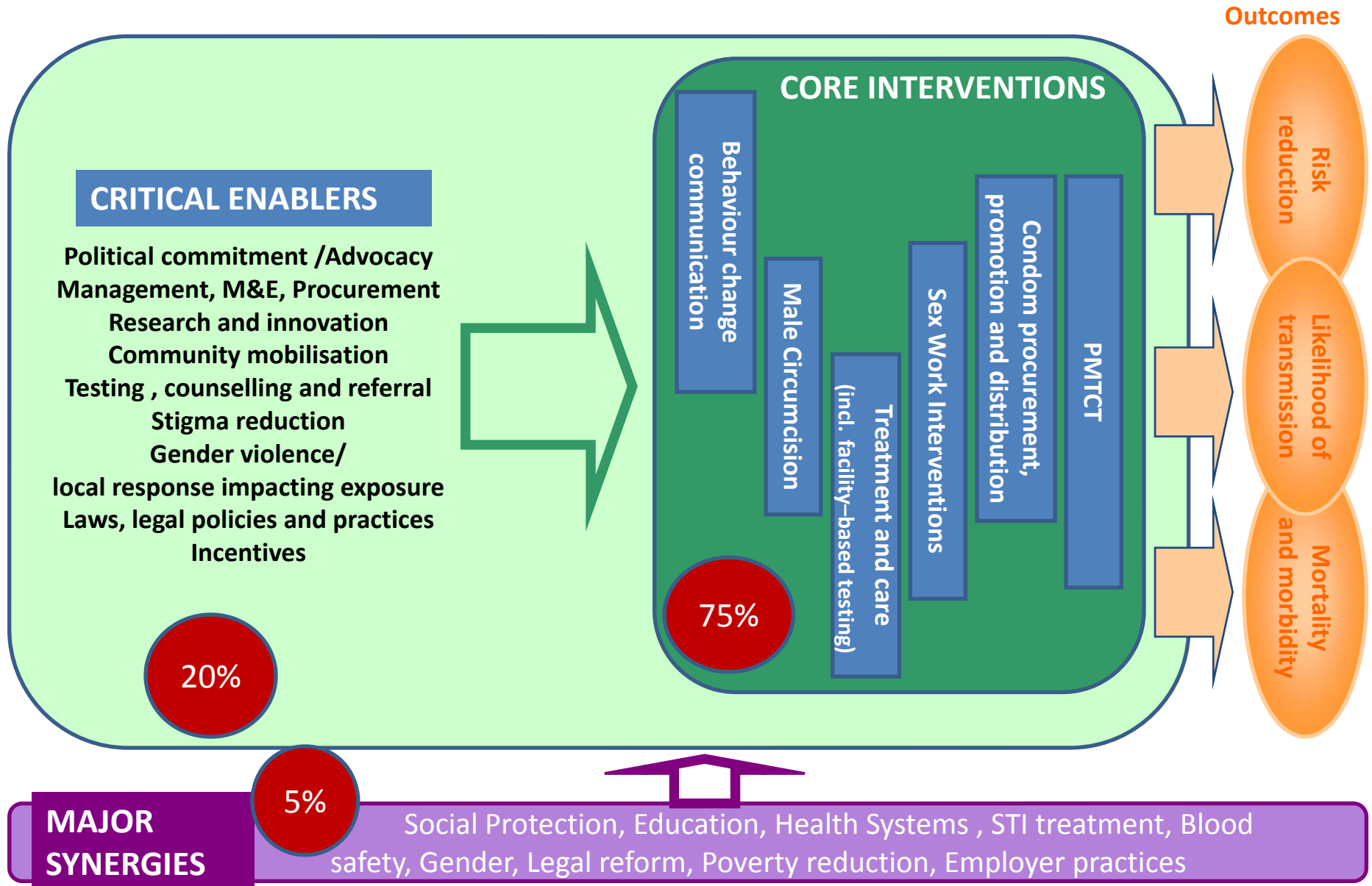
Percent HIV positive, women and men age 15-24 years



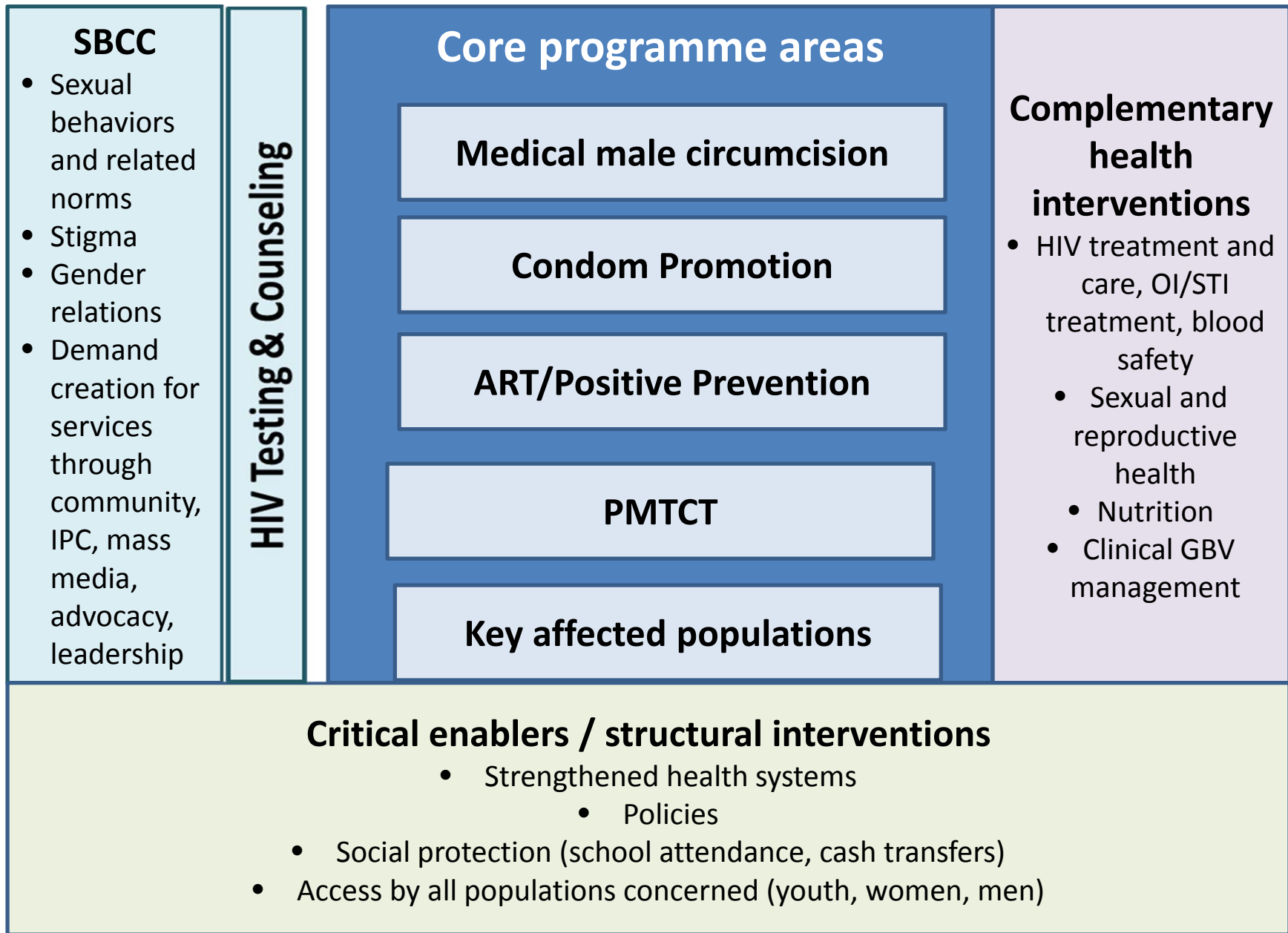
Generalized Epidemic

Source: Schwartlander, B

For Whom?: explicitly identify and prioritize on populations, geography, Age, Sex...



Draft Zimbabwe Combination HIV Prevention Framework



Basis and Rationale of HIV Prevention Approach

- Given the primary transmission mode, significant emphasis on prevention of sexual transmission
- Primary orientation of behavior change communication is to increase acceptance of biomedical prevention services within target populations
- Applying the latest prevention technologies and “state-of-the-art” practices
- Utilizing evidence-based monitoring and evaluation methods to maximize public health impact
- Fully integrated within nationally “owned” prevention programs
- Investing our little resources into what gives us the best result



COMBINATION PREVENTION AND THE INVESTMENT FRAMEWORK

Zimbabwe sees the IF as an opportunity to:

- Review and re-prioritize the national response
- More realistic costing, resource flow analysis (both internal/external and monetary/non-monetary)
- Gaining on efficiencies and effectiveness and building an investment case for HIV
- Zimbabwe is committed to implementing the IF and coordinating the process to develop a road map for the next steps for Zimbabwe using the IF

THANK YOU