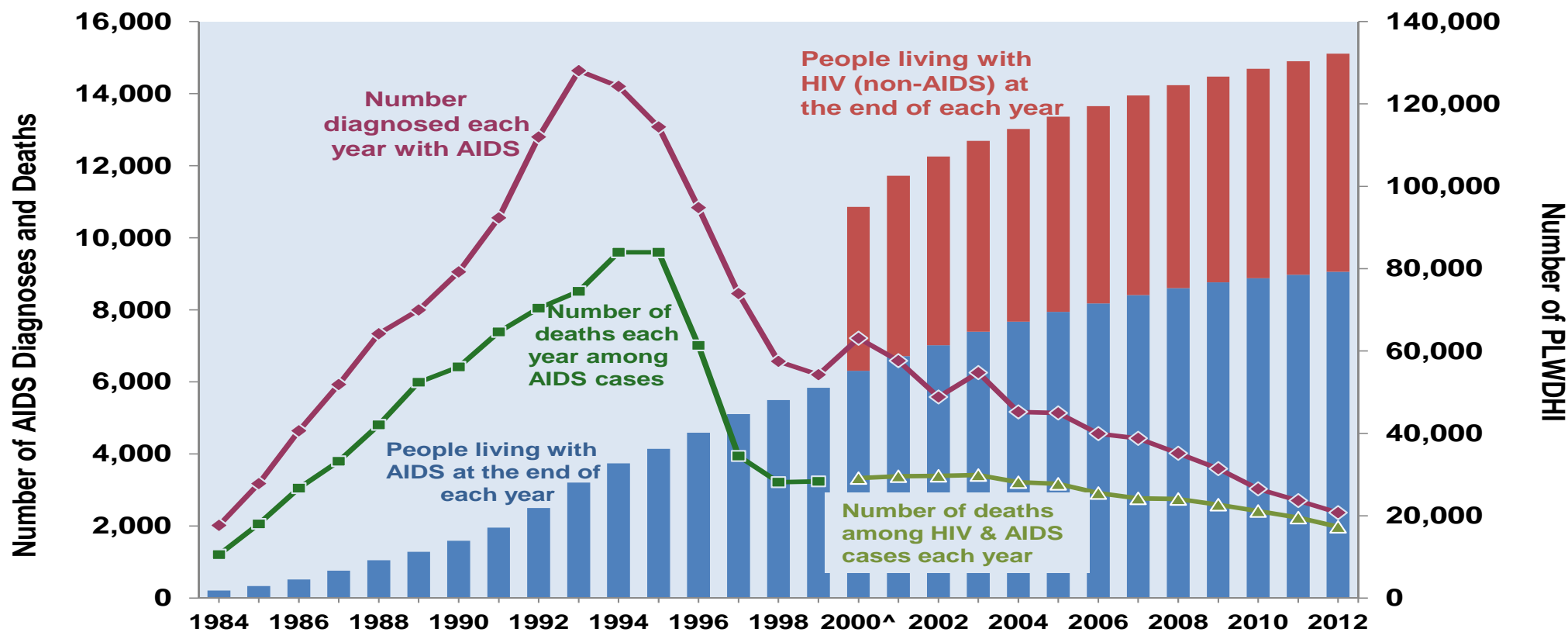


Trends in HIV and AIDS Cases*

New York State, 1984 - 2012

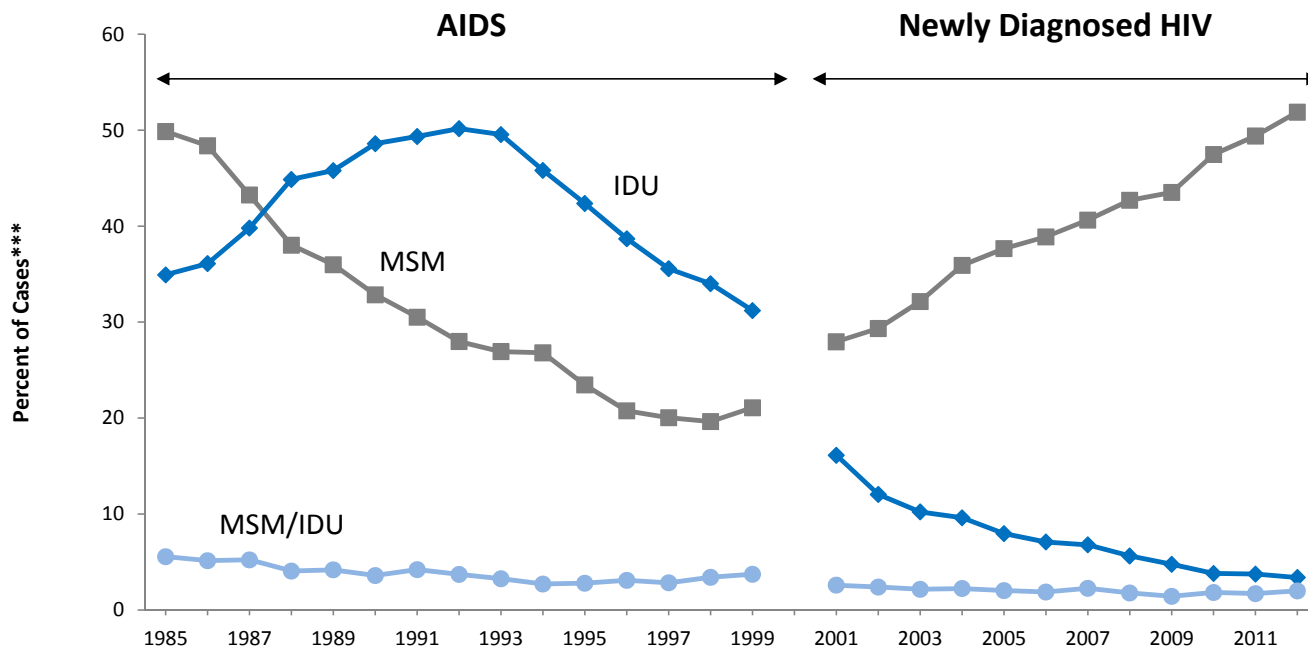


*Data as of April 2014

^HIV named reporting began in NYS in 2000;

deaths among HIV and AIDS cases are reported starting in 2000.

Figure 1: Proportion of HIV and AIDS Cases* by Risk and Year of Diagnosis, NYS, 1985-2012**



*AIDS Cases are shown for 1985-1999

Source: NYSDOH/AI/BHAE

**Data as of December 6, 2013

***Percentages are based on the total number of new HIV diagnoses for each year, regardless of transmission category.



Models of syringe access

- Storefront
- Mobile staff – on foot and by van
- Special arrangement- mostly in rural areas
- Pharmacy sales
- Peer delivered syringe exchange

Opioid maintenance helps you protect yourself from HIV.

Up to 6 times higher HIV risk without drug treatment

Lower HIV risk with methadone maintenance treatment

Quality Health Care Is Your Right!

87 HIV Infections Prevented
\$37.1 Million Saved in Treatment Costs

Stay Healthy and **SURVIVE!**

Protect Yourself When You Inject Drugs:

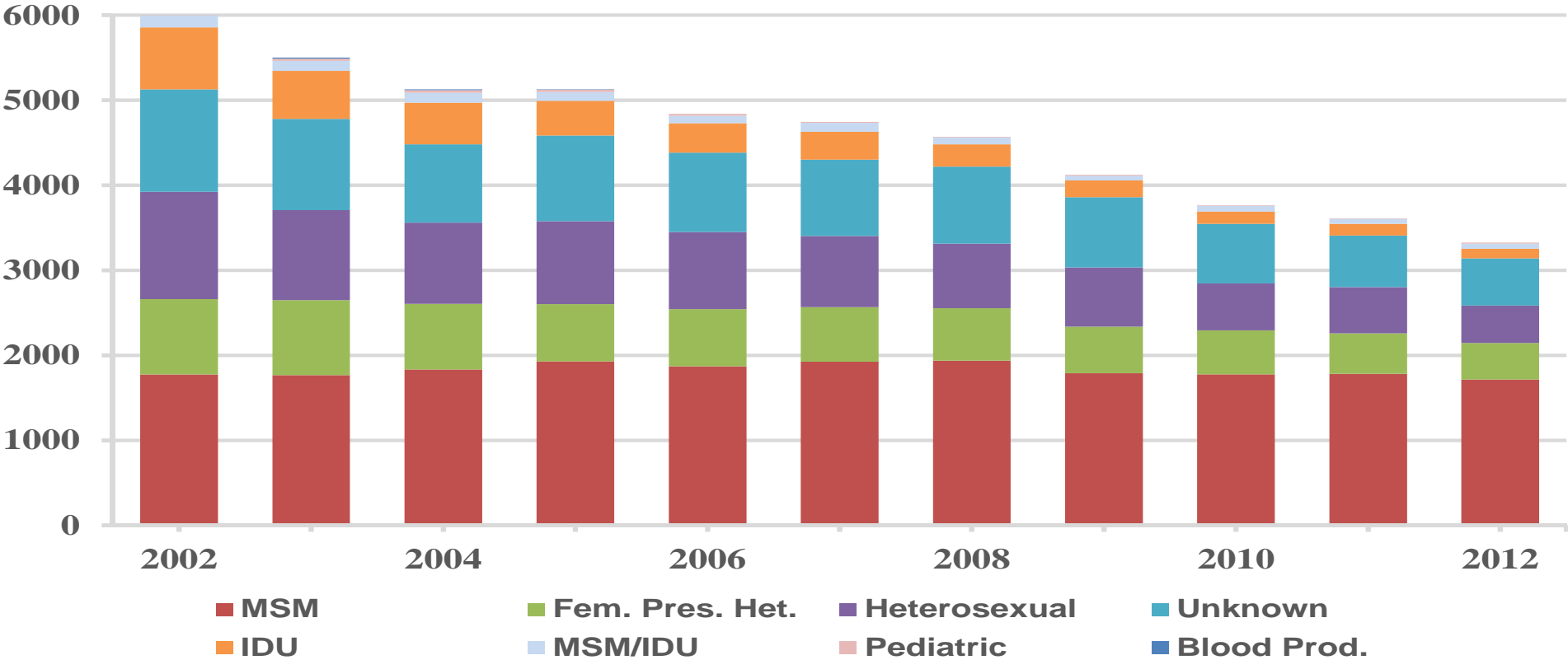
See an overdose?

911

Call 911 immediately!

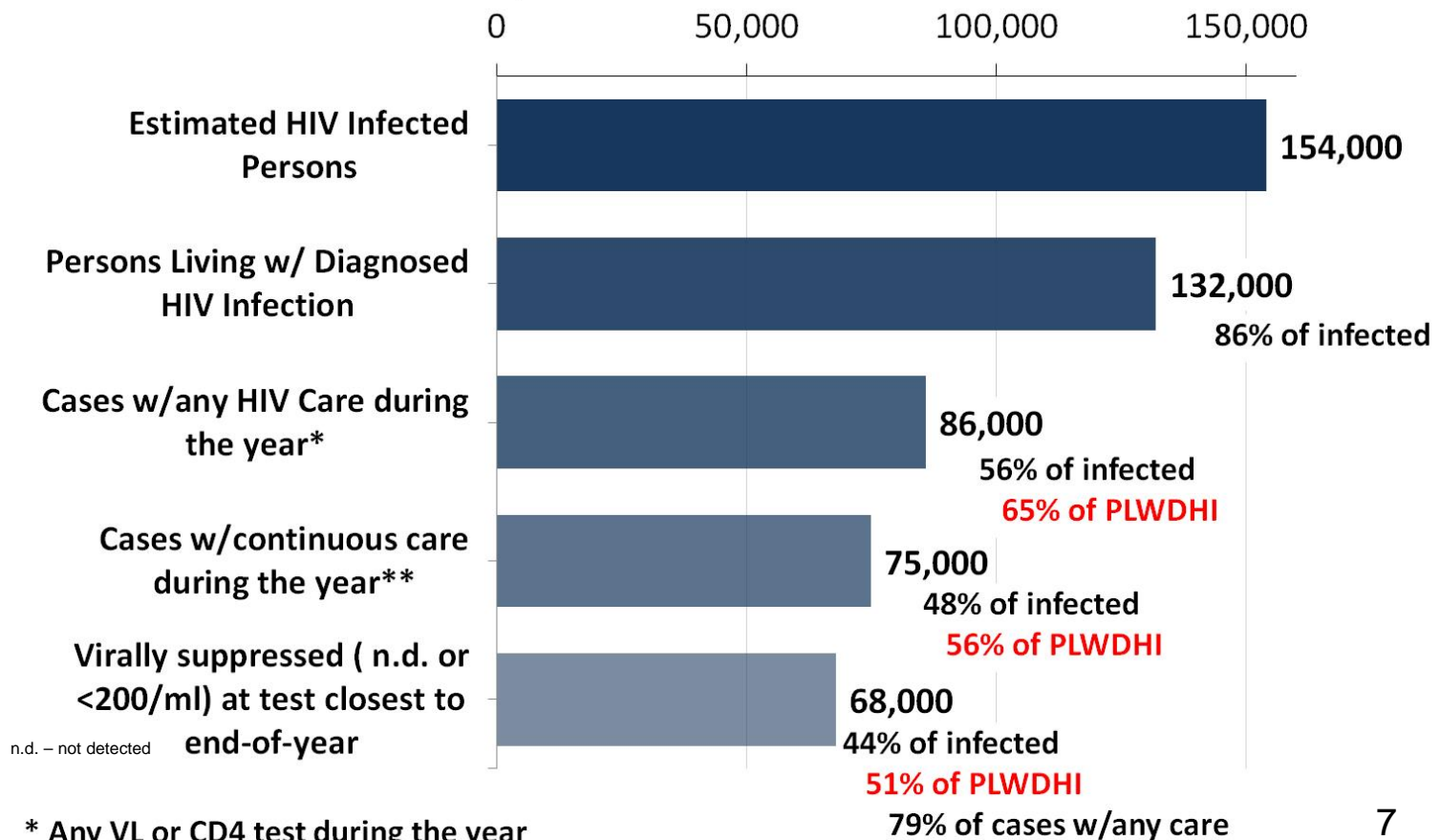
EXPANDED SYRINGE ACCESS PROGRAM
E S A P

Newly Diagnosed HIV Cases by Transmission Risk New York State, 2002-2012*

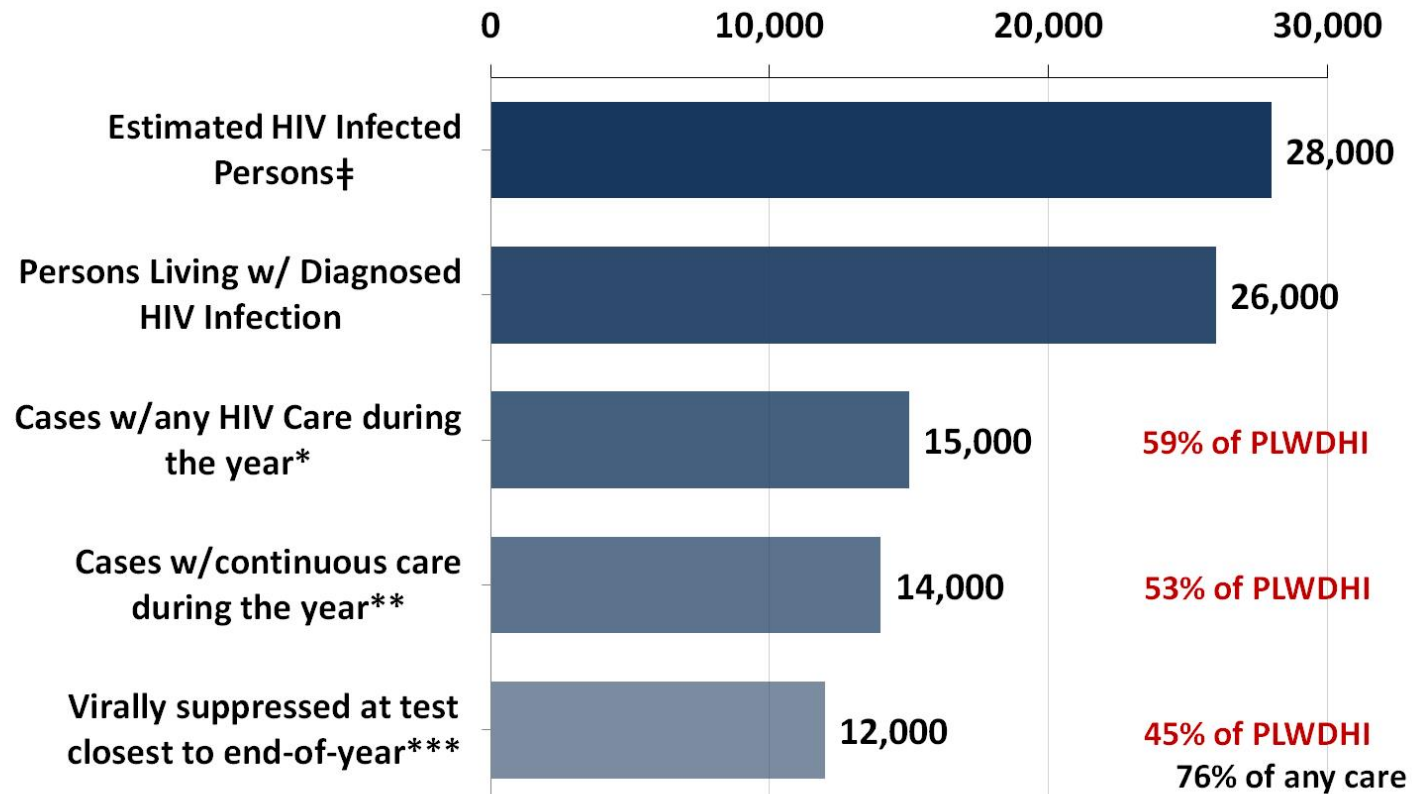


*December 2013

Cascade of HIV Care New York State, 2012



Cascade of HIV Care, New York State, 2012 Injection Drug Users§



§ Includes cases with IDU and MSM/IDU HIV transmission risk

‡ 7.3% are infected and unaware; based on composite of CDC and NYS estimates

* Any VL or CD4 test during the year

** At least 2 tests, at least 3 months apart

*** Non-detectable viral load or viral load ≤ 200 /ml